

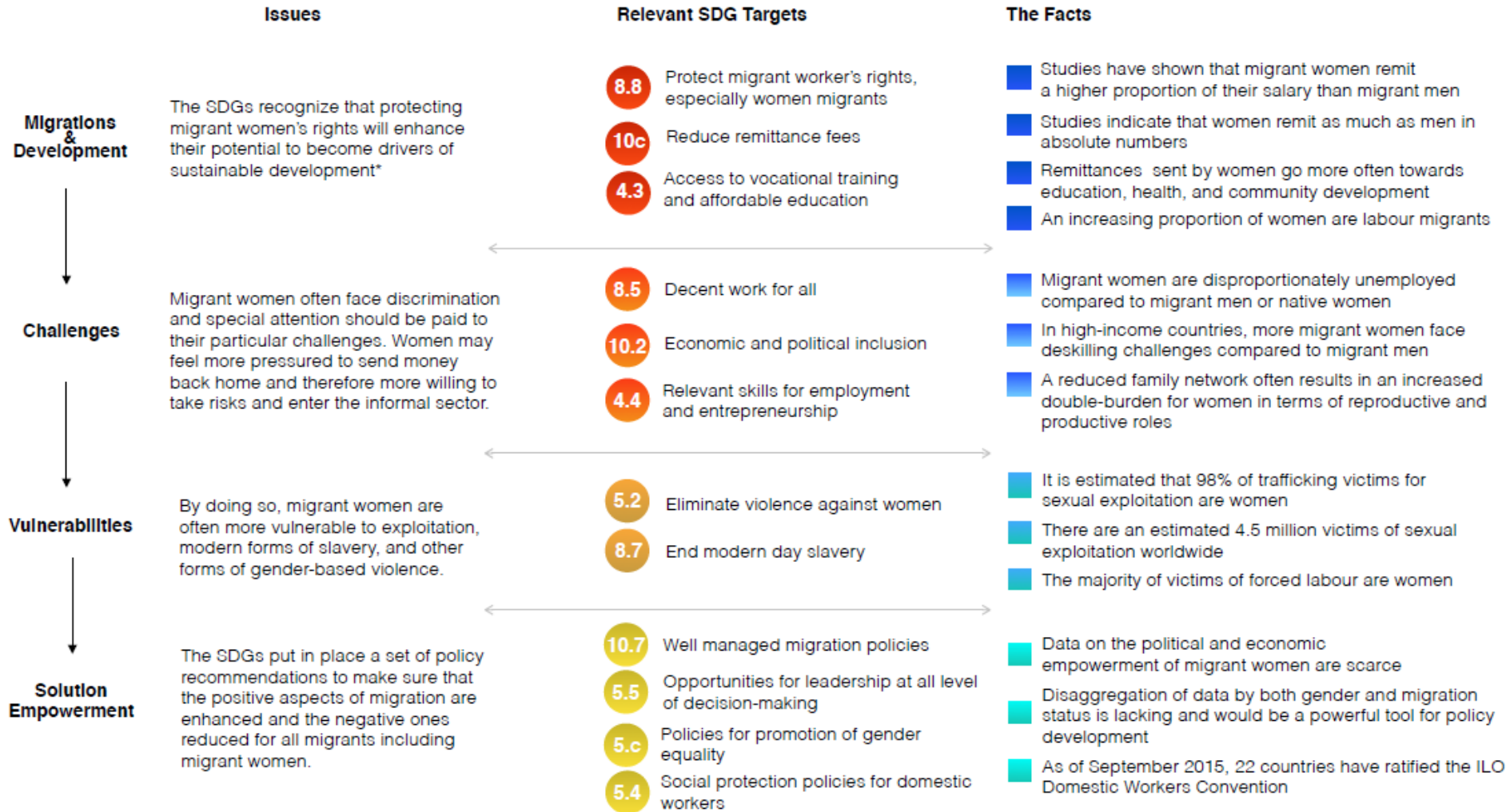
Thematic Meeting 3:

“Recognizing the contributions of women migrants to economic and social development in countries of origin and destination and addressing their specific needs”

Split families, children left behind

*Geneva: 8 September 2015
Salle II, R3 Level, ILO Building*

Women Migrants in the SDGs



* As mentioned in Rio+20 outcome document par. 43 and par. 238

* Facts on remittances stem from UN-Women's background paper for the 2015 GFMD third thematic meeting on migrant women

All facts on deskilling and labour migration stem from IOM's publication « Crushed hopes: Underemployment and deskilling among skilled migrant women » (2012)

All facts about trafficking stem from ILO's publication « ILO global estimate of forced labour 2012, results and methodology » (2012)



IOM • OIM

INTERNATIONAL
ORGANIZATION
FOR MIGRATION



Photo credit: Andrea Diefenbach



INTERNATIONAL
ORGANIZATION
FOR MIGRATION



Photo credit: Andrea Diefenbach



IOM • OIM

INTERNATIONAL
ORGANIZATION
FOR MIGRATION



Photo credit: Andrea Diefenbach



INTERNATIONAL
ORGANIZATION
FOR MIGRATION



Photo credit: Andrea Diefenbach



INTERNATIONAL
ORGANIZATION
FOR MIGRATION



Photo credit: Andrea Diefenbach



IOM • OIM

INTERNATIONAL
ORGANIZATION
FOR MIGRATION



Photo credit: Andrea Diefenbach



IOM • OIM

INTERNATIONAL
ORGANIZATION
FOR MIGRATION



Photo credit: Andrea Diefenbach



INTERNATIONAL
ORGANIZATION
FOR MIGRATION



Photo credit: Andrea Diefenbach



INTERNATIONAL
ORGANIZATION
FOR MIGRATION



Photo credit: Andrea Diefenbach



INTERNATIONAL
ORGANIZATION
FOR MIGRATION



Photo credit: Andrea Diefenbach



INTERNATIONAL
ORGANIZATION
FOR MIGRATION



Photo credit: Andrea Diefenbach





INTERNATIONAL
ORGANIZATION
FOR MIGRATION





IOM • OIM

INTERNATIONAL
ORGANIZATION
FOR MIGRATION





INTERNATIONAL
ORGANIZATION
FOR MIGRATION





Policy recommendations

- Receiving countries to favor family reunification
- Appointment of legal guardian as matter of priority
- Develop specific community services
- Provide targeted training to psychologists, social workers etc.
- Supporting remittances but address adverse consequences
- Diaspora engagement to facilitate communication